



Kariotakis



Suspended disc harrows

The SmartDisc is the new generation of suspended disc harrows, with independent discs with the use of which is obtained the decomposition of organic substances remaining in the soil after harvest, while preventing the loss of soil moisture. By using the SmartDisc directly after harvest is achieved the optimum soil preparation, smoothing the soil and achieving the intensive mixing of crop residue with the soil to facilitate decomposition and better soil combination.



▶ Basic points	4
▶ Equipment	5
▶ Independent discs	6
▶ Metal traps	8
▶ Toothed discs	10
▶ Best working angle	12
▶ Hydraulic adjustment of the rear cylinder	14
▶ Safe transport	16
▶ Accessories	18
▶ Stable models	20
▶ Folding models	21



Ability to choose rear cylinder

You can choose between three different types of rear cylinders depending the soil conditions.

3 point connection with the tractor

The center of gravity of the machine is close to the tractor for smoother and continuous work.

2 rows of discs

The ideal distance 1070mm between 2 rows of discs in combination with the working slope of the independent arms have an ideal results.

Notched discs

The notched discs are appropriate because with the notched discs the SmartDisc can works in plowed fields as well as the machine can work and in not plowed fields.





Self-Lubricant bearings :

The Self-Lubricant base on each disc is a dynamic solution as the use of the repairable base gives the advantage to the operator with minimum maintenance cost the SmartDisc to work continuously even in the most difficult working conditions. At the repairable base we use Double-row angular-contact ball bearings with standard commercial codes.

The lubrication of the bearings is a lifelong lubrication, maintenance-free .

The bearing at each base of the discs is made of cast metal alloy for durability in hardworking conditions.



Hydraulic adjustment of the rear cylinder - Standart:

With the rear roller the operator can adjust the working depth of the machine. Easily and simply from the tractors cabin the working depth of the SmartDisc is set hydraulically. The machine can be adapted to different working conditions and is being achieved a uniform scraping and incorporation of organic residues during work.

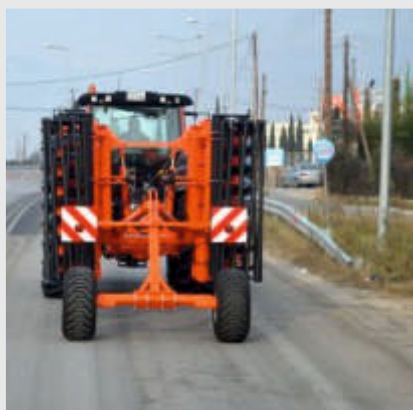
The operator of the tractor has the choice to use or not the rear cylinder because it has the ability to lift the rear cylinders completely and to work only with the discs.



Side plates:

For uniform final result at the SmartDisc can be adapted side plates.

You can regular the height of the side plates in multiple locations without tools. So depending on the working depth of the machine can be set and the working depth of the side plates



Safe transport:

Models over 4,0m working width folded in the middle hydraulically for most safe and easy transport. So unaccompanied the SmartDisc can be safely transferred as the carriage width of the folding machine is not exceeding the 2,75m.



Indepentet discs

The SmartDisc may yield the greatest soil cultivation as each disc can work independently.

Having the ideal slope angle we have achieved less resistance, better penetration and mixing of crop residues with the soil. Easier adaptation to any working conditions since **each disc can be lifted independently** of the others to a height up to **20cm from the working depth**.

Optimum distance between the discs at 12.5cm enough to overtake the SmartDisc any large solid body during work. The elasticity of each disc is achieved by using four rubbers on each arm where each rubber is secured in position with metal traps to prevent movement, damage and destruction of each rubber.



Arm...like closed box...with double bar steel.



SmartDisc



Rubbers and metal traps- Standard



The elasticity of each disc is being achieved from the use of **4 rubbers at each arm** which are kept to the original position with the help of **4 metal traps, one for each rubber** to avoid the movements of the rubbers as the SmartDisc is working & to prevent the rubbers destruction.

SmartDisc



Notched discs

The use of the toothed disc is necessary because helps the SmartDisc to work in not plowed fields directly after harvesting but it can work and in plowed fields also.

Having the ideal slope angle to each arm we have achieved less resistance, better penetration and mixing of crop residues with the soil.

You have the ability to adapt at the same arm disc diameter **560mm or 610mm** 6mm thickness best quality discs or Italian discs.



SmartDisc



Best working angle



Kariotakis

New Arm

Disc Diameter:
Ø 570mm
Ø 610mm

Best working angle

This graphic displays the 'New Arm' product line. It features a large orange arm with a black disc, two smaller views of the arm and disc, and a full assembly of five arms. A diagram at the bottom indicates the 'Best working angle' with an arrow pointing to a specific angle.



SmartDisc



Hydraulic adjustment of the rear cylinder

With the rear roller the operator can adjust the working depth of the machine. Easily and simply from the tractor's cabin **the working depth of the SmartDisc is set hydraulically.** Easily the machine can be adapted to different working conditions. Is being achieved a uniform scraping and incorporation of organic residues during work. The operator of the tractor has the choice to use or not the rear cylinder because it has the ability to lift the rear cylinders completely and to work only with the discs.



SmartDisc



BAR-ROL



Ø 580mm

DOUBLE



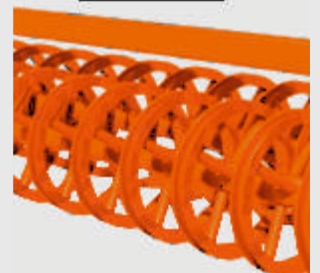
Ø 450mm / Ø 450mm

U-Knife



Ø 600mm

U-2P Roller



Ø 600mm

Safe transport

Models over 4,0m working width folded in the middle hydraulically for most safe and easy transport.

So unaccompanied the SmartDisc can be safely transferred as the transportation width of the folding machine is not exceeding the **2,75m**



SmartDisc





Side plates:

- For uniform final result at the SmartDisc can be adapted side plates.
- » You can regular the height of the side plates in multiple locations without tools
 - » So depending on the working depth of the machine can be set and the working depth of the side plates.



Rear row with springs for sowing bed:

- For even more uniform distribution and cultivation of the soil you can adjust behind the rear cylinders a row of springs for the preparation of the sowing bed. With these springs is being achieved a perfect cultivation at the soil and the ideal conditions for the preparation of the sowing bed as it can be adjusted and the working depth of the springs mechanically.



Adjusting sowing or a trace hopper

- Onto the SmartDisc can be adjusted a special hopper with independent distributor for small seeds (rapeseed, clover etc) or a distributor of trace elements even granular fertilizers. Using the hopper you are saving time and money as with one pass is possible the cultivation and the fertilization of the soil at the same time. The hopper is available in different sizes, can have hydraulically or electrically connection with the tractor adjusting many functions (dropping speed, quantity etc.) all the functions can be adjusted from a control in the cab of the tractor. With the hopper is given the advantage to the operator to control all the dynamic settings that a mutli-machinery like SmartDisc can provide for perfect result.

Stable models



	SMD250B	SMD300B	SMD350B	SMD400B
Working width (m)	2,50	3,00	3,50	4,00
Tractor HP	Min.95HP	Min.110HP	Min.140HP	Min.160HP
Transportation width (m)	2,75	3,25	3,75	4,25
Repairable base with cone bearings	√	√	√	√
Metal traps	√	√	√	√
Notched disc diameter 560 or 610 mm / 6mm	√	√	√	√
Hydraulically adjusted rear roller	√	√	√	√
Weight (Kgr)	1.475	1.675	1.925	2.115

SmartDisc



Folding models



	SMD400AB	SMD450AB	SMD500AB	SMD550AB	SMD600AB
Working width (m)	4,00	4,50	5,00	5,50	6,00
Tractor HP	Min.170HP	Min.170HP	Min.170HP	Min.200HP	Min.230HP
Transportation width (m)	2,90	2,90	2,90	2,90	2,90
Repairable base with cone bearings	√	√	√	√	√
Metal traps	√	√	√	√	√
Notched disc diameter 560 or 610 mm / 6mm	√	√	√	√	√
Hydraulically adjusted rear roller	√	√	√	√	√
Weight (Kgr)	2.000-2.490	2.400-2.890	2.700-3.100	2.900-3.490	3.100-3.510

SmartDisc



Trailed models



	SMD400AB T	SMD450AB T	SMD500AB T	SMD550AB T	SMD600AB T
Working width (m)	4,00	4,50	5,00	5,50	6,00
Tractor HP	Min.170HP	Min.170HP	Min.170HP	Min.200HP	Min.230HP
Transportation width (m)	3,00	3,00	3,00	3,00	3,00
Repairable base with cone bearings	√	√	√	√	√
Metal traps	√	√	√	√	√
Notched disc diameter 560 or 610 mm / 6mm	√	√	√	√	√
Hydraulically adjusted rear roller	√	√	√	√	√
Weight (Kgr)	3.700 - 4.200	3.950 - 4.450	4.200 - 4.800	4.550 - 5.000	4.900 - 5.300

SmartDisc





You are....
...in good hands.



Kariotakis O.E.
14km Drama - Kavala
Agios Athanasios
66300 Drama
Greece

Dealer : _____

Tel: +30 25210 66426
Fax: +30 25210 66401